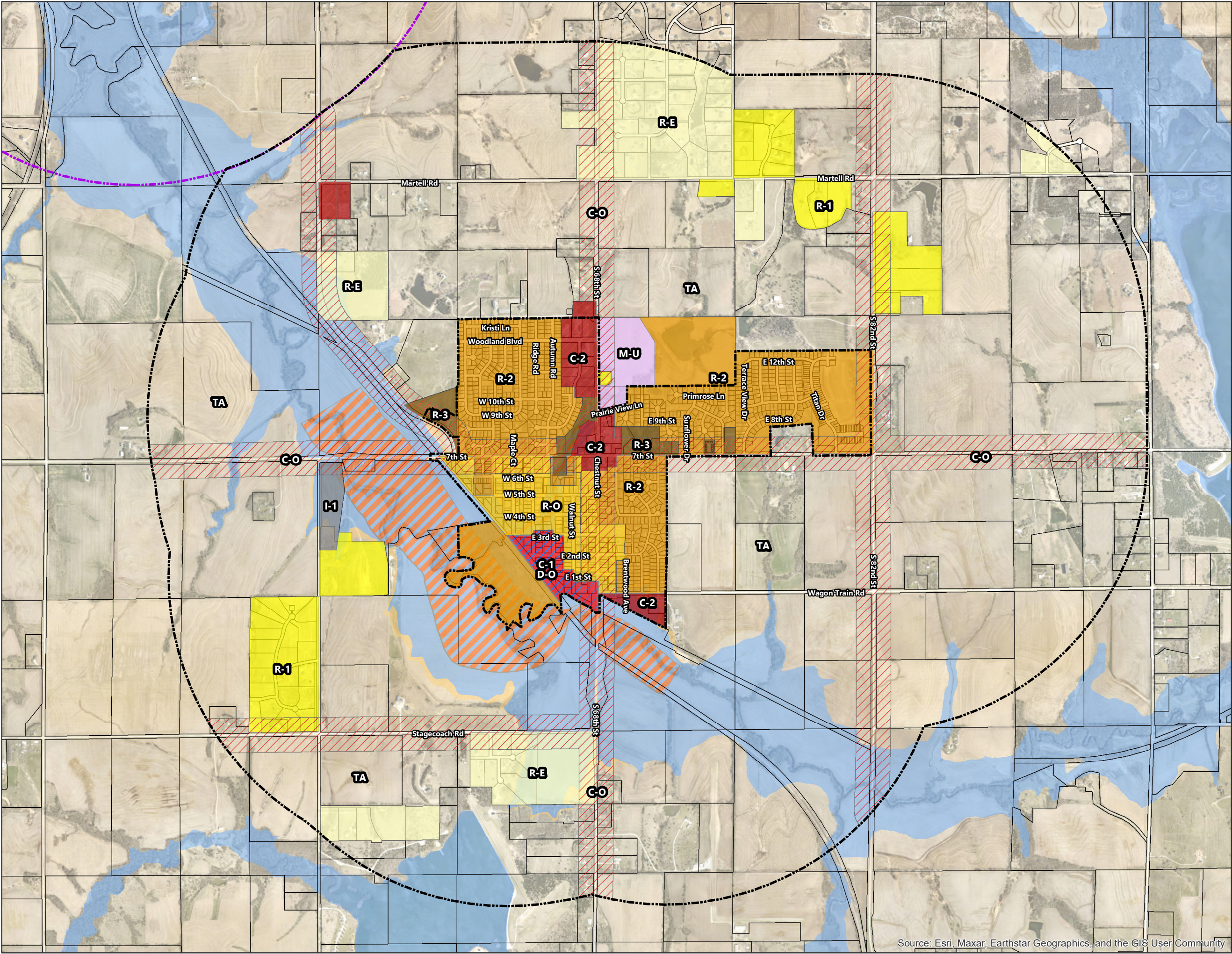


HICKMAN, NEBRASKA
ZONING REGULATIONS
ZONING MAP



LEGEND

Hickman 1-Mile ETJ
 Roca 1-Mile ETJ
 City Limits

Zoning District

- Transitional Agriculture (TA)
- Residential Estates (R-E)
- Low Density Residential (R-1)
- Original Residential District (R-O)
- Medium Density Residential (R-2)
- High Density Residential (R-3)
- Mixed Use (M-U)
- Central Business District (C-1)
- General Commercial District (C-2)
- Corridor Overlay District (C-O)
- Downtown Overlay District (D-O)
- Light Industrial (I-1)
- Parcels

Floodplain Overlay District (FP-O)

- 1% Annual Chance Flood Hazard
- 0.2% Annual Chance Flood Hazard
- Floodway

THIS IS TO CERTIFY THAT THIS IS THE OFFICIAL ZONING MAP REFERRED TO IN SECTION ____ OF ORDINANCE NO. _____ OF THE CITY OF HICKMAN, LANCASTER COUNTY, NEBRASKA. THIS OFFICIAL ZONING MAP SUPERSEDES AND REPLACES ANY OR ALL OTHER OFFICIAL ZONING MAPS ADOPTED PRIOR TO THIS DATE, ADOPTED ON THIS 12TH DAY OF SEPTEMBER, 2023.

MAYOR	REVISION DATE	ORDINANCE NO.	SIGNATURE	ATTESTED: CITY CLERK	REVISION DATE	ORDINANCE NO.	SIGNATURE

N

0 0.125 0.25 0.5 Miles

PROJECTION: NE State Plane (Ft.)
DATUM: NAD 83
DATE: 09.12.23

Source: Esri, Maxar, Earthstar Geographics, and the GIS User Community